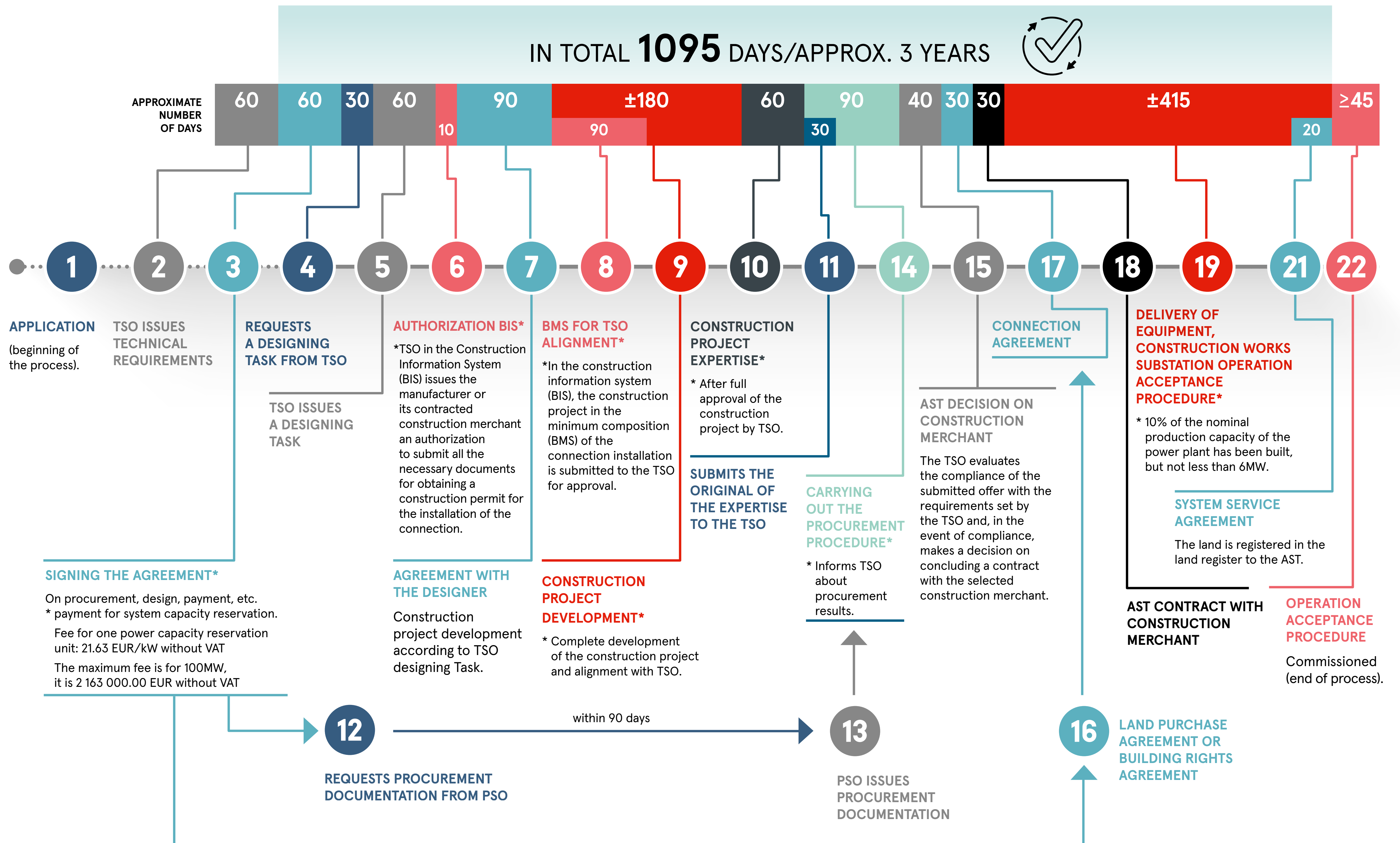


# PROCESS SCHEME AND TIME SCHEDULE FOR CONSTRUCTION OF A NEW SUBSTATION IN THE CASE OF A SEPARATE DESIGNING PROCESS



## IMPORTANT! THE NUMBER OF DAYS MAY BE LONGER IF:

- 1) To connect the substation, a new power transmission line must be built and an EIA is required, as well as coordination with the landowners;
  - 2) Not all documents have been submitted, or they are incorrectly formatted;
  - 3) The number of days for commissioning depends on the User's organization of tests and inspections and the results of inspections;
  - 4) One of the procurements ended without results the first time and a re-procurement procedure must be carried out.
- IMPORTANT! The developer must create his own project schedule (plan timely submission of documents, conclusion of contracts, etc.) without violating the specified deadlines.